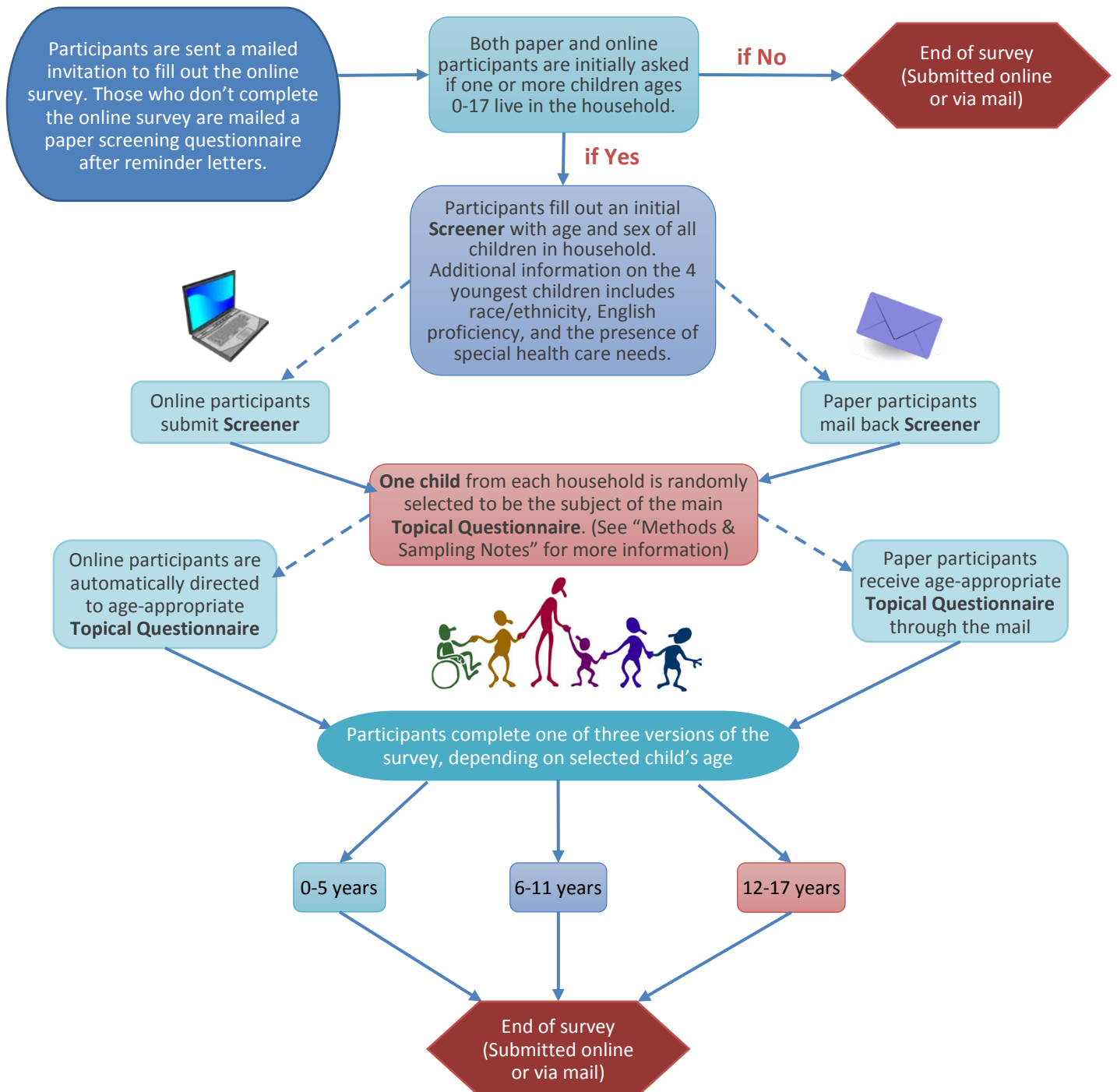


2016 National Survey of Children's Health (NSCH)

Sampling and Survey Administration

The 2016 *National Survey of Children's Health* was administered via mail and the internet. Randomly selected addresses from civilian, non-institutionalized households across the United States were mailed instructions to access the survey online. After at least one reminder letter, those households who had not accessed the online survey were mailed a paper screening questionnaire. Please see the "Methods & Sampling Notes" section for more information on this process.

Survey Administration



Methods & Sampling Notes

- To increase sampling efficiency, administrative data were used to determine which addresses were more likely to be households with children aged 0-17 years.
- The survey over-sampled children 0-5 years and children with special health care needs (CHSCN). This means that in households with 2 or more children, CHSCN and children 0-5 years old had a higher probability of being selected as compared to other children in the household.
- Number of surveys completed:
 - 139,923 households screened for age-eligible children (approximately 2744 per state)
 - 50,212 child-level questionnaires completed (approximately 985 per state)
 - 11,392 questionnaires completed on CHSCN (approximately 223 per state)
- To view the questionnaires in English and Spanish, see: <http://childhealthdata.org/learn/NSCH/resources/survey-instruments>. In addition, participants were able to access telephone-based assistance in order to complete the questionnaire in additional languages.
- For more detailed information on the NSCH, see <http://childhealthdata.org/learn/NSCH/FAQ> and <https://mchb.hrsa.gov/data/national-surveys>.

